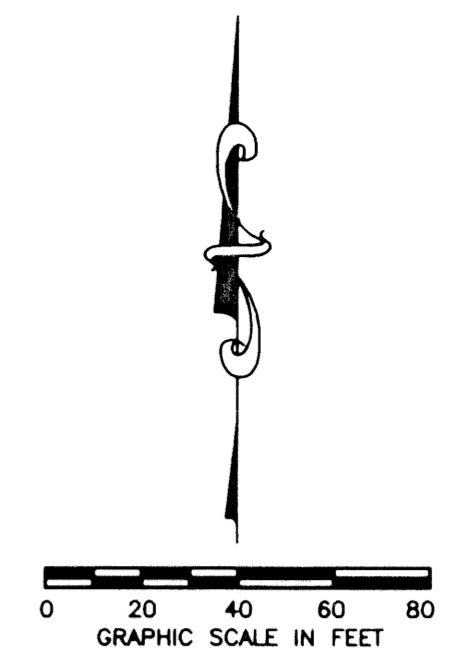


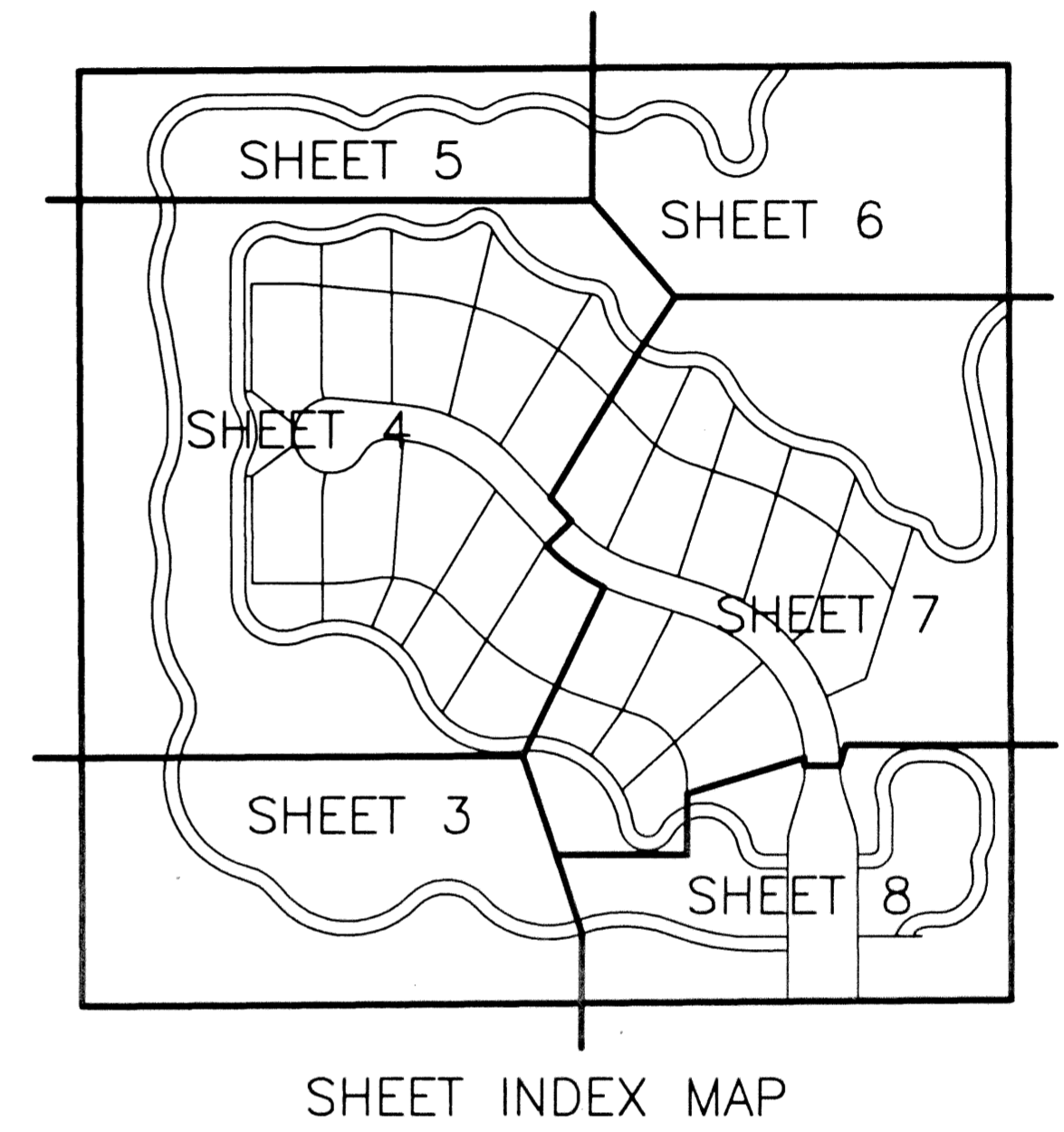
LE RIVAGE, A P.U.D.

BEING A REPLAT OF TRACTS 102 THROUGH 109, BLOCK 71, TOGETHER WITH
 A PORTION OF THE ADJACENT ROADWAYS TO THE NORTH AND TO THE WEST,
 PALM BEACH FARMS COMPANY PLAT NO. 3, PLAT BOOK 2, PAGES 45 THROUGH 54
 SECTION 32, TOWNSHIP 46 SOUTH, RANGE 42 EAST,
 AND SECTION 5, TOWNSHIP 47 SOUTH, RANGE 42 EAST,
 PALM BEACH COUNTY, FLORIDA
 JANUARY, 2001 SHEET 5 OF 8

62

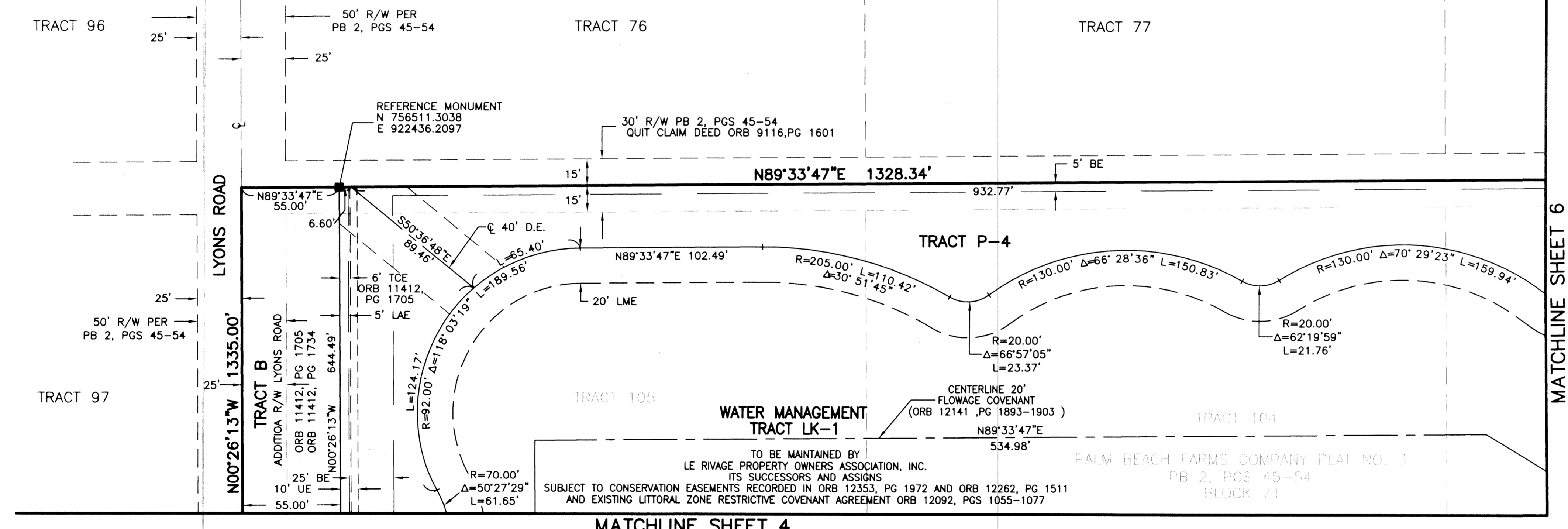


STATE OF FLORIDA
 COUNTY OF PALM BEACH
 THIS PLAT WAS FILED FOR
 RECORD _____
 THIS _____ DAY OF _____
 AD, 2001 AND DULY RECORDED
 IN PLAT BOOK _____ ON PAGES
 _____ AND _____
 DOROTHY H. WILKEN, CLERK
 BY: _____ D.C.
 CIRCUIT COURT SEAL



PALM BEACH FARMS COMPANY
 PLAT NO. 3, PB 2, PGS 45-54
 BLOCK 70

PALM BEACH FARMS COMPANY PLAT NO. 3
 PB 2, PGS 45-54
 BLOCK 71



LEGEND

BE	BUFFER EASEMENT
Δ	CENTRAL (DELTA) ANGLE
CH	CHORD
CL	CENTERLINE
DA	DEVELOPMENT AREA
DE	DRAINAGE EASEMENT
L	ARC LENGTH
LAE	LIMITED ACCESS EASEMENT
LME	LAKE MAINTENANCE EASEMENT
LMAE	LAKE MAINTENANCE ACCESS EASEMENT
LSE	LIFT STATION EASEMENT
(NR)	NON-RADIAL
ORB	OFFICIAL RECORDS BOOK
P	PRESERVATION AREA
PB	PLAT BOOK
P.B.CO.	PALM BEACH COUNTY
PG(S)	PAGE(S)
R	RADIUS
R/W	RIGHT OF WAY
TCE	TEMPORARY CONSTRUCTION EASEMENT
UE	UTILITY EASEMENT
O/S	OFF SET
■	4" X 4" CONCRETE MONUMENT
●	SET LB 048
○	PERMANENT CONTROL POINT
○	SET LB 048
○	PALM BEACH COUNTY BRASS DISK

TO BE MAINTAINED BY
 LE RIVAGE PROPERTY OWNERS ASSOCIATION, INC.
 ITS SUCCESSORS AND ASSIGNS
 SUBJECT TO CONSERVATION EASEMENTS RECORDED IN ORB 12353, PG 1972 AND ORB 12262, PG 1511
 AND EXISTING LITTORAL ZONE RESTRICTIVE COVENANT AGREEMENT ORB 12092, PGS 1055-1077

THIS INSTRUMENT WAS PREPARED BY DAVID L. SMITH, P.S.M. IN THE
 OFFICES OF MOCK, ROOS & ASSOCIATES, INC., 5720 CORPORATE WAY,
 WEST PALM BEACH, FLORIDA 33407.

SCALE:
 1"=40'
 P.A. NO.:
 99048.00
 DATE:
 JANUARY 2001
 DRAWING NO.
 46-42-32-5

MOCK • ROOS
 ENGINEERS • SURVEYORS • PLANNERS
 5720 Corporate Way, West Palm Beach, Florida 33407
 (561) 683-3113, fax 478-7248

LE RIVAGE, A P.U.D.
 BEING A REPLAT OF TRACTS 102 THROUGH 109,
 BLOCK 71, TOGETHER WITH A PORTION OF THE ADJACENT
 ROADWAYS TO THE NORTH AND TO THE WEST,
 PALM BEACH FARMS COMPANY, PLAT NO. 3,
 PLAT BOOK 2, PAGES 45 THROUGH 54
 SECTION 32, TOWNSHIP 46 SOUTH, RANGE 42 EAST,
 AND SECTION 5, TOWNSHIP 47 SOUTH, RANGE 42 EAST,
 PALM BEACH COUNTY, FLORIDA

LE RIVAGE, A P.U.D.
 PAGE 62
 FLOOD MAP # RISA
 TANKING # 6R-1PUD
 ZIP CODE 33490
 33470
 33490

S:\sch\sch\wfd\dwg\WTFDRP04.dwg 03/06/01 04:38:42 PM EST

CAD FILE:
 SCHWTFD\WTFDRP04